

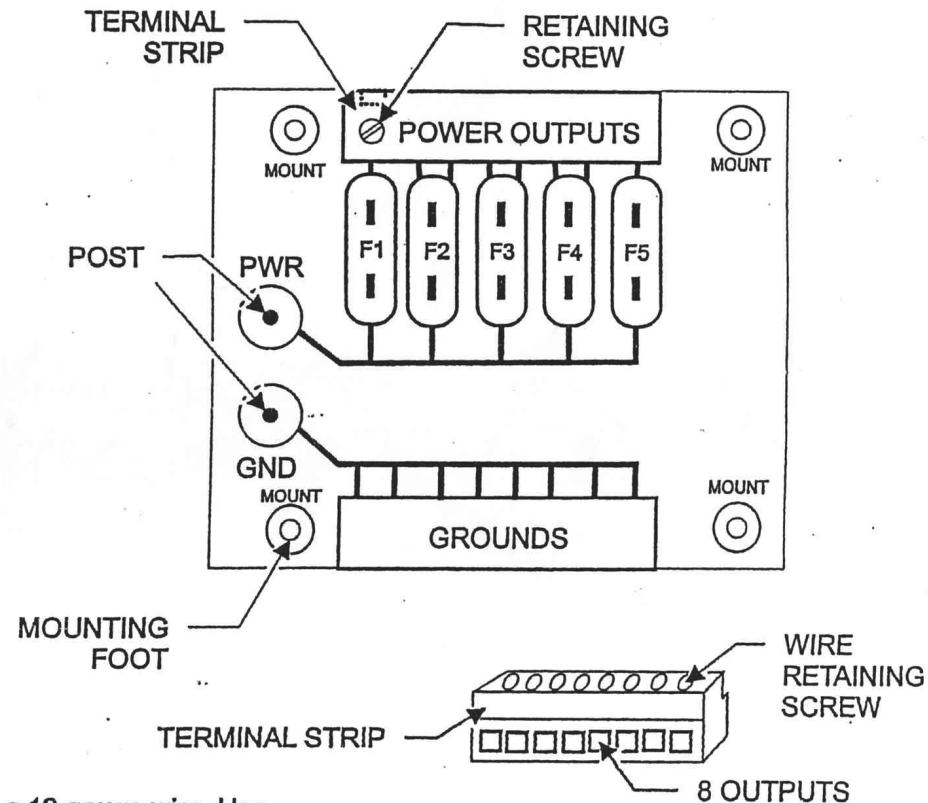
INSTALLATION

1. Remove the top cover from the AP-1 and mount the unit using screws through the four stainless steel mounting feet.
2. Attach a 12 gauge or heavier power wire between the **PWR** post and the current source (normally your battery (+) post or Ignition switch). Use a fusible link or Maxi-Fuse at the battery post. Use the heavy duty ring terminal provided. Solder and heat shrink all connections.
3. Attach a 12 gauge or heavier ground wire between the **GND** post on the AP-1 and your battery (-) post or frame. Use the heavy duty ring terminal provided.
4. Attach all positive power wires from your appliances to the power output terminal strip. Note that the three center fuses feed two outputs while the end fuses feed only one output post. This is done by stripping off 1/8" of insulation from the wire and inserting the bare wire into the opening of the terminal strip. Use a small screwdriver to tighten the retaining screw above the wire in the terminal strip.
5. Attach all ground wires from your appliances to the ground terminal strip.
6. After wiring and testing of your circuits, re-install the top cover on the AP-1 fuse panel.

HINTS: Each terminal strip opening can accept up to a 12 gauge wire. Use the metal traces between the fuses and the terminal strip as a guide to indicate which fuse feeds which terminal strip opening. Any terminal on the "ground" terminal strip can be used with any fuse.

WARNING: The AP-1 can handle a maximum of 60 AMPERES. Select the proper fuses as required by your needs.

Centech
wiring



Centech
wiring

AP-1
Auxilliary
Fuse Panel